

ERAU Daytona Beach – Windows 8 Wireless Printing

1. Open Internet Explorer (32bit and **not 64bit**)
2. In the Internet Explorer URL address bar, type: <http://dbwips01.erau.edu/printers>

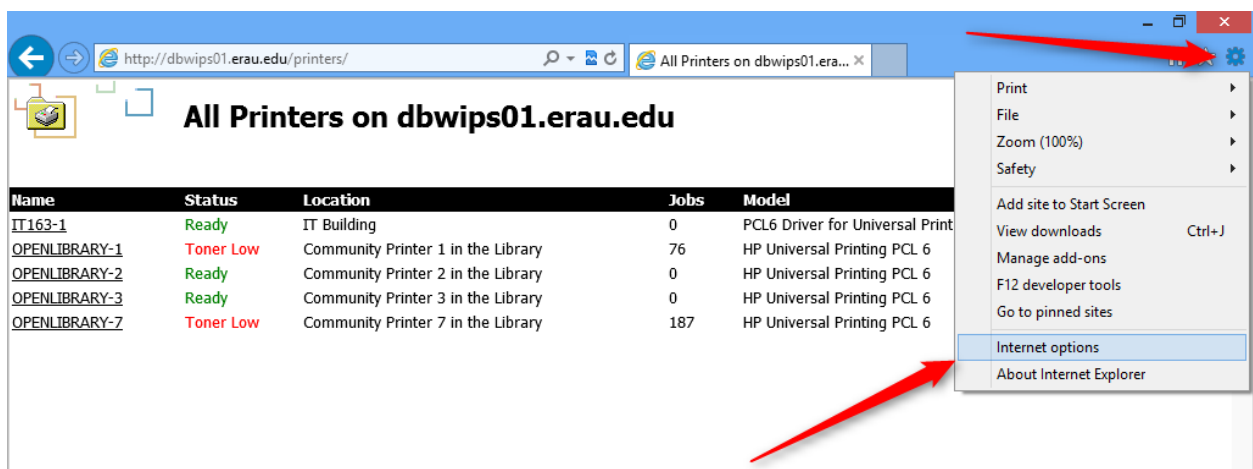


3. Internet Explorer will be directed to the All Printers on dbwips01.erau.edu web page

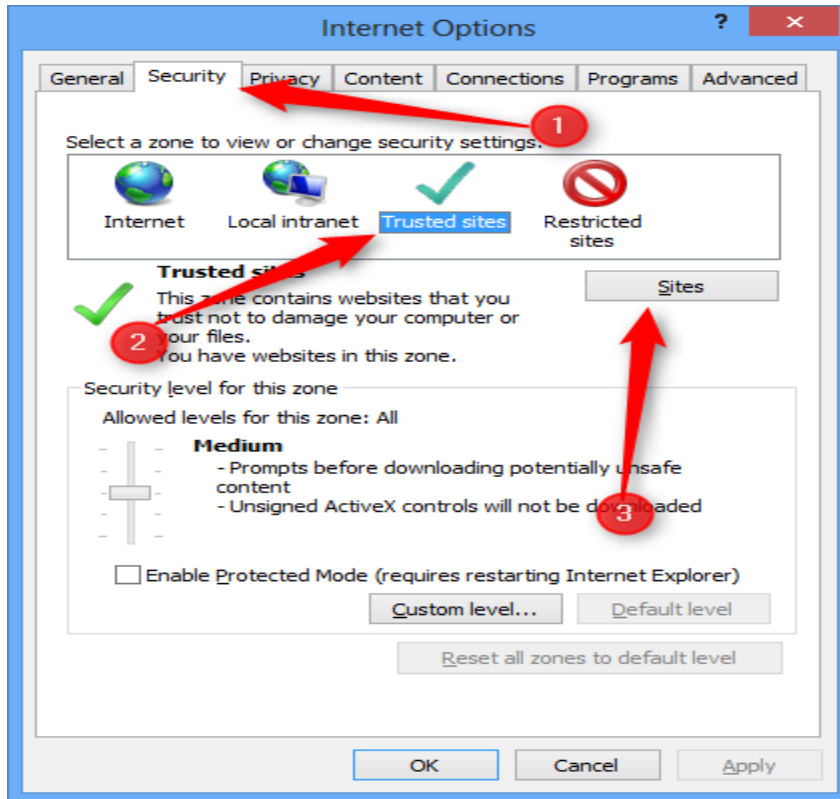
The screenshot shows the Internet Explorer browser window displaying the "All Printers on dbwips01.erau.edu" web page. The page title is "All Printers on dbwips01.erau.edu". Below the title is a table with the following data:

Name	Status	Location	Jobs	Model	Comment
IT163-1	Ready	IT Building	0	PCL6 Driver for Universal Print	
OPENLIBRARY-1	Toner Low	Community Printer 1 in the Library	76	HP Universal Printing PCL 6	155.31.80.136
OPENLIBRARY-2	Ready	Community Printer 2 in the Library	0	HP Universal Printing PCL 6	155.31.80.232
OPENLIBRARY-3	Ready	Community Printer 3 in the Library	0	HP Universal Printing PCL 6	155.31.25.65
OPENLIBRARY-7	Toner Low	Community Printer 7 in the Library	187	HP Universal Printing PCL 6	155.31.25.108

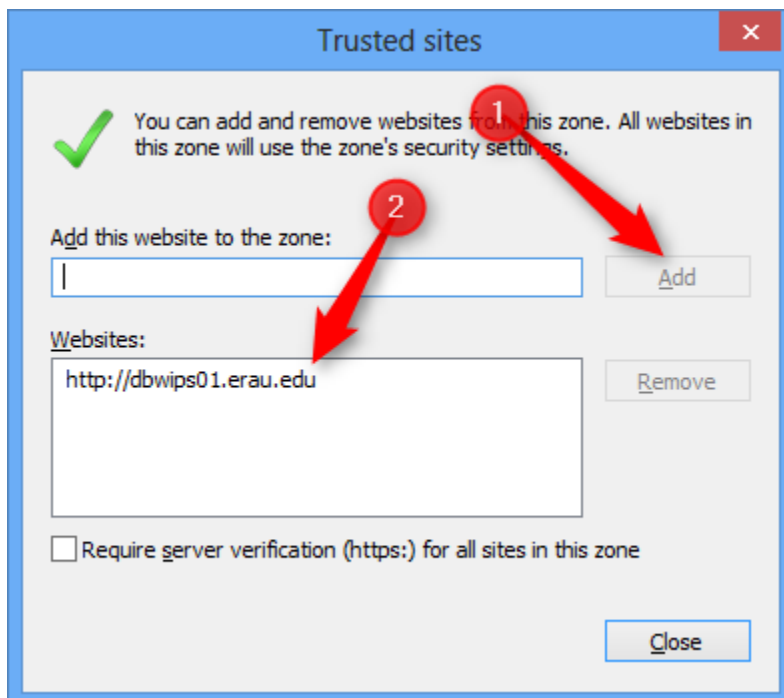
4. Click the settings icon and select Internet Options from the drop down menu



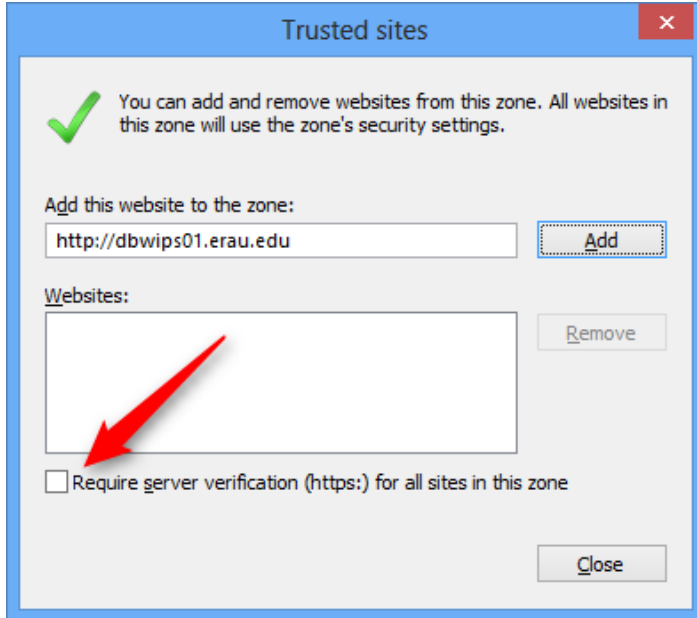
5. On the Internet Options window, click the Security tab. Click the Trusted Sites Icon, then click the Sites button



6. Uncheck "Require server verification (https:) for all sites in the zone"



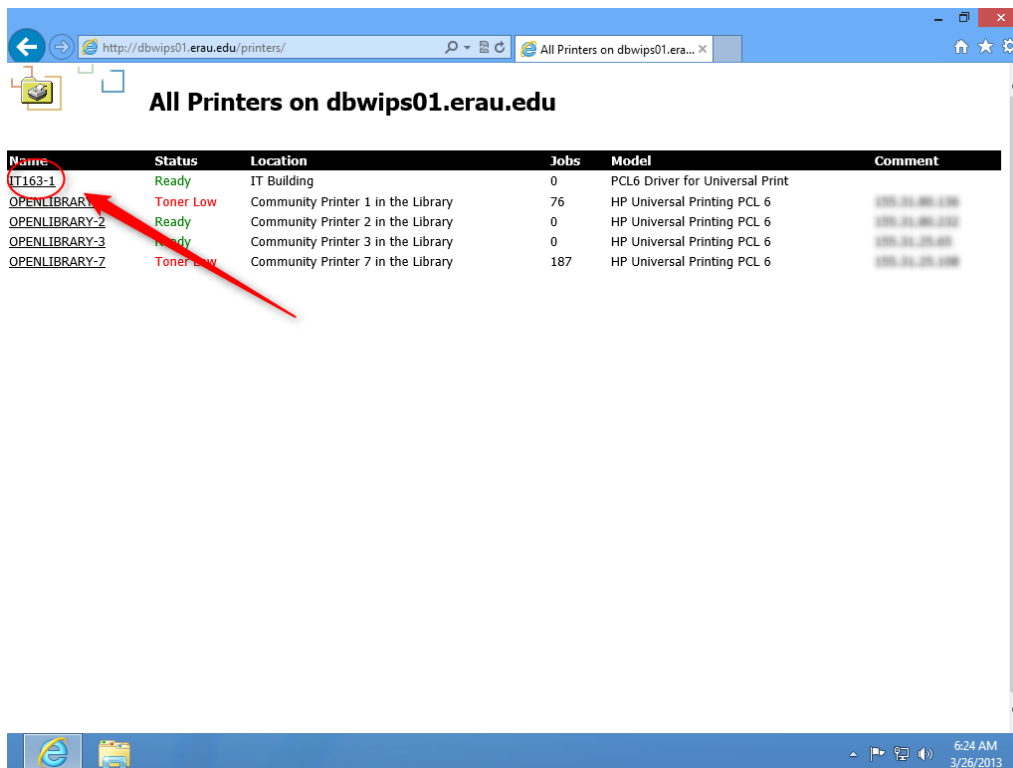
7. Click the Add button. You will see <http://dbwips01.erau.edu> added to the Websites box



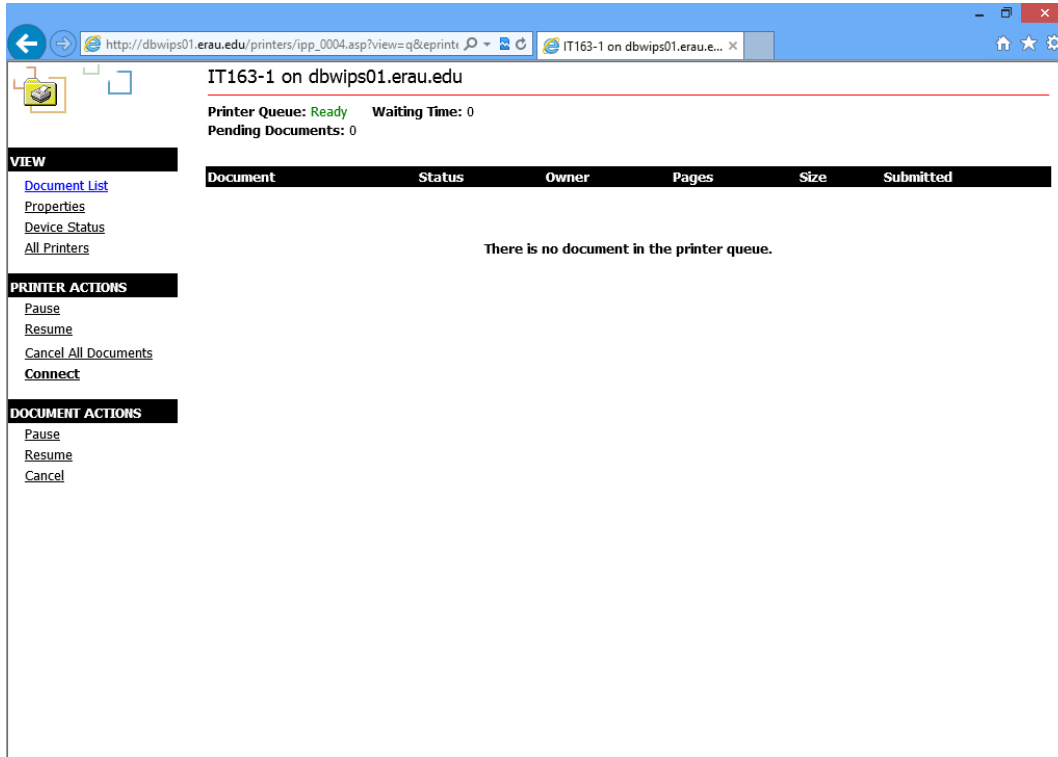
8. Click Close

9. Click Apply (if applicable) and then click OK

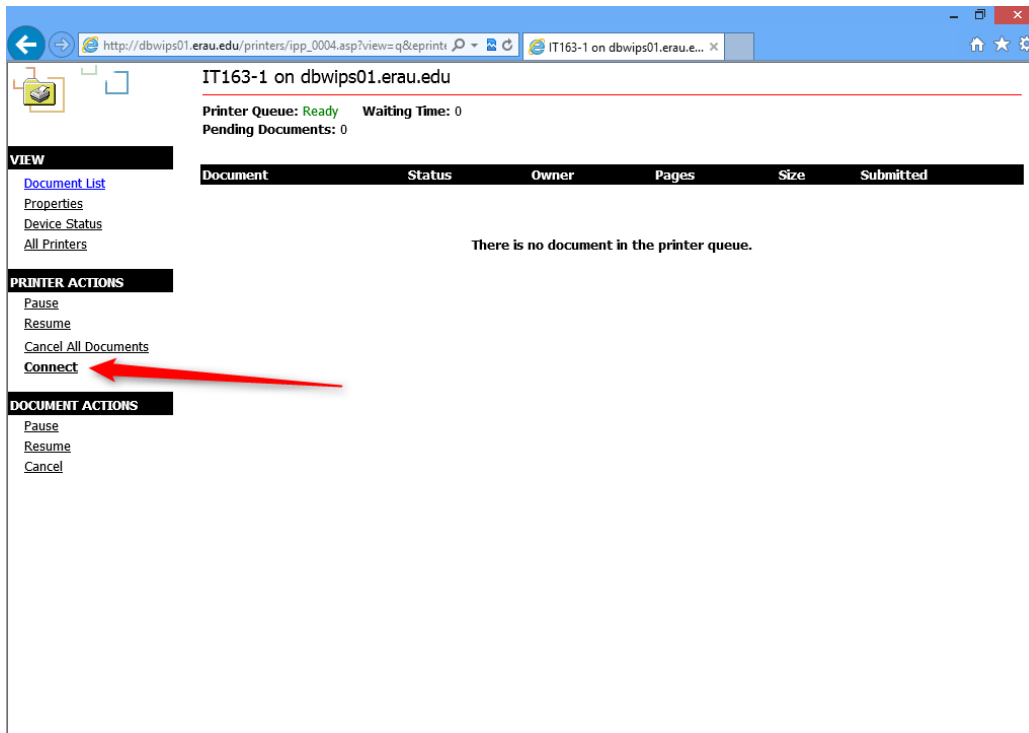
10. Find the printer in the list you wish to print to and click that printer's link



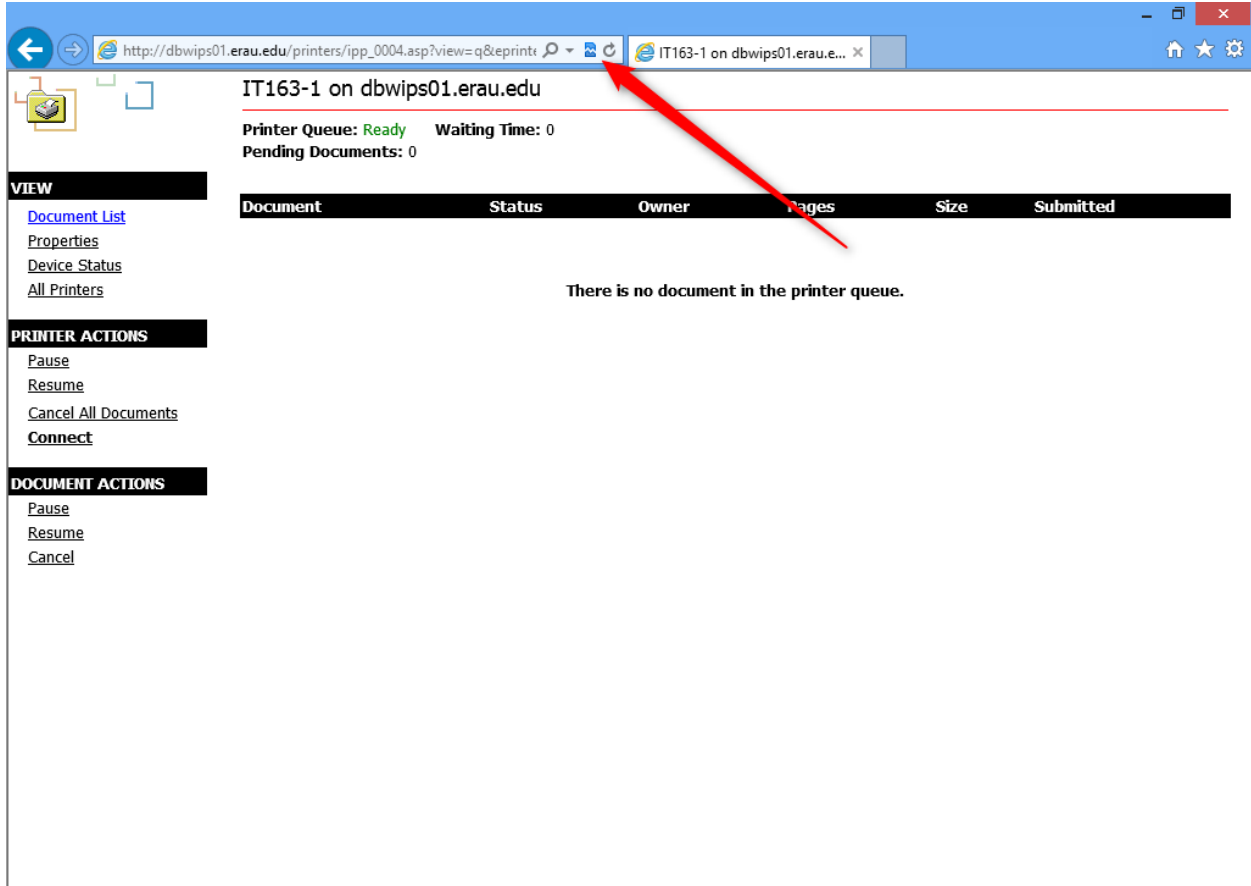
11. Internet Explorer will be directed to a webpage showing the name of the printer and the printer queue



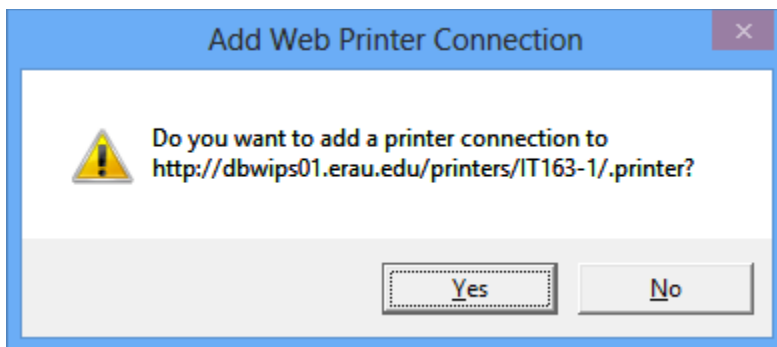
12. Click the compatibility view icon in the address bar



13. On the left, under Printer Actions, click Connect

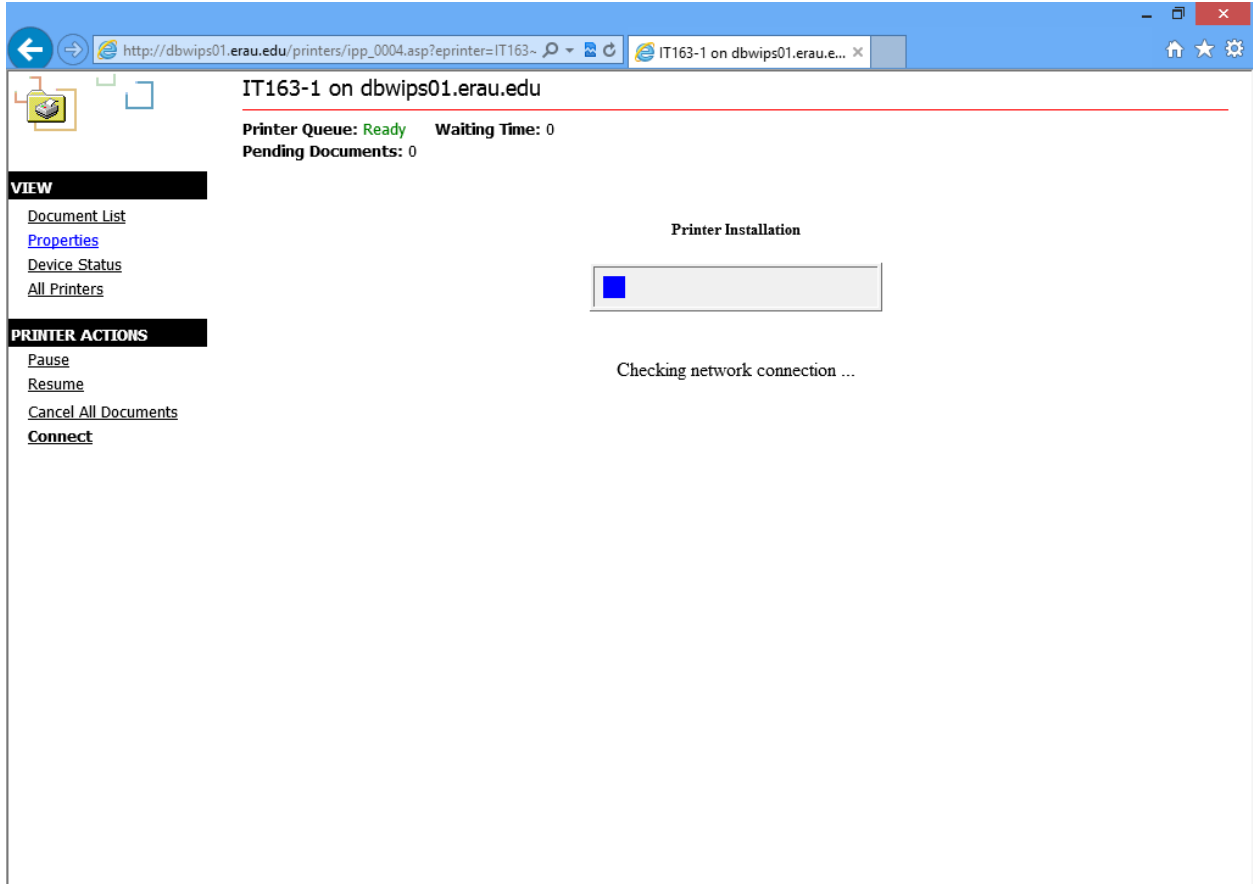


14. The Add Web Printer Connection dialogue box will pop up confirming your printer connection

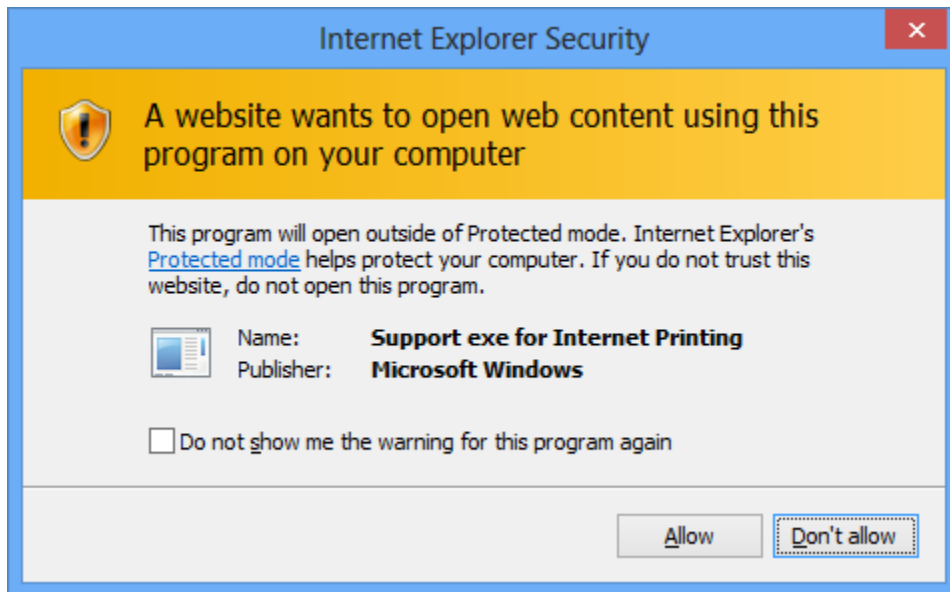


15. Click Yes

16. The printer driver will begin installing. This might take a few minutes.

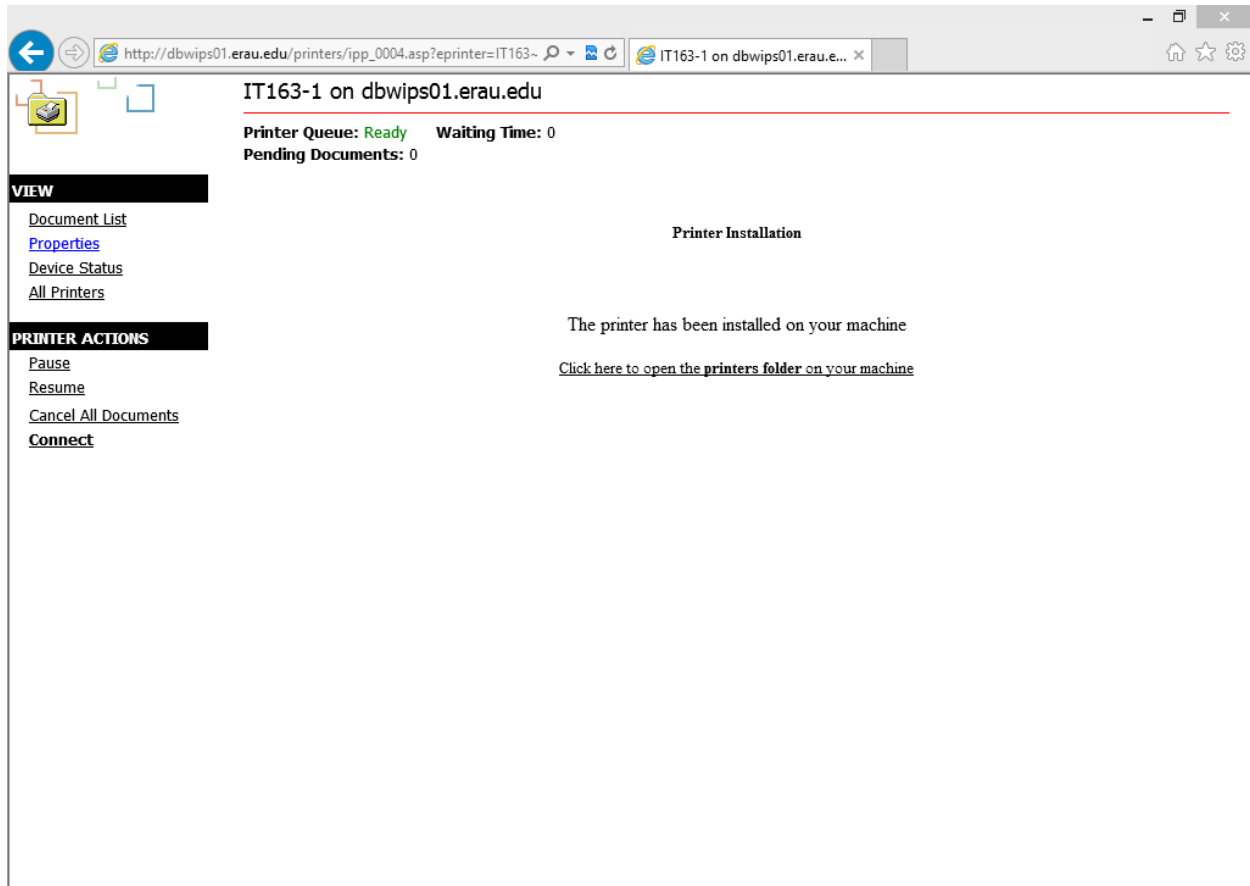


17. The User Account Control or Internet Explorer Security dialogue box may pop up



18. Click Yes/Allow

19. If the printer was installed successfully, you will see the following message in your browser window



The screenshot shows a web browser window with the address bar displaying http://dbwips01.erau.edu/printers/ipp_0004.asp?eprinter=IT163-1. The page title is "IT163-1 on dbwips01.erau.edu". The main content area displays the printer's status: "Printer Queue: Ready" and "Waiting Time: 0", with "Pending Documents: 0" below it. On the left side, there are two menu sections: "VIEW" containing links for "Document List", "Properties", "Device Status", and "All Printers"; and "PRINTER ACTIONS" containing links for "Pause", "Resume", "Cancel All Documents", and "Connect". The central part of the page features a "Printer Installation" section with the message "The printer has been installed on your machine" and a link that says "Click here to open the printers folder on your machine".